

Ferritin Heavy Chain / FTH1 Antibody (C-Terminus)
Goat Polyclonal Antibody
Catalog # ALS12621**Specification**

Ferritin Heavy Chain / FTH1 Antibody (C-Terminus) - Product Information

Application	WB, IHC-P, E
Primary Accession	P02794
Reactivity	Human, Monkey
Host	Goat
Clonality	Polyclonal
Calculated MW	21kDa KDa
Dilution	WB~~1:1000 IHC-P~~N/A E~~N/A

Ferritin Heavy Chain / FTH1 Antibody (C-Terminus) - Additional Information**Gene ID** 2495**Other Names**

Ferritin heavy chain, Ferritin H subunit, 1.16.3.1, Cell proliferation-inducing gene 15 protein, Ferritin heavy chain, N-terminally processed, FTH1, FTH, FTHL6

Target/Specificity

Human FTH1.

Reconstitution & Storage

Store at -20°C. Minimize freezing and thawing.

Precautions

Ferritin Heavy Chain / FTH1 Antibody (C-Terminus) is for research use only and not for use in diagnostic or therapeutic procedures.

Ferritin Heavy Chain / FTH1 Antibody (C-Terminus) - Protein Information**Name** FTH1**Synonyms** FTH, FTHL6**Function**

Stores iron in a soluble, non-toxic, readily available form. Important for iron homeostasis. Has ferroxidase activity (PubMed:9003196). Iron is taken up in the ferrous form and deposited as ferric hydroxides after oxidation (PubMed:9003196). Also plays a role in delivery of iron to cells (By similarity). Mediates iron uptake in capsule cells of the developing kidney (By similarity). Delivery to lysosomes is mediated by the cargo receptor NCOA4 for autophagic degradation and release of

iron (PubMed:24695223, PubMed:26436293).

Cellular Location

Cytoplasm. Lysosome. Cytoplasmic vesicle, autophagosome

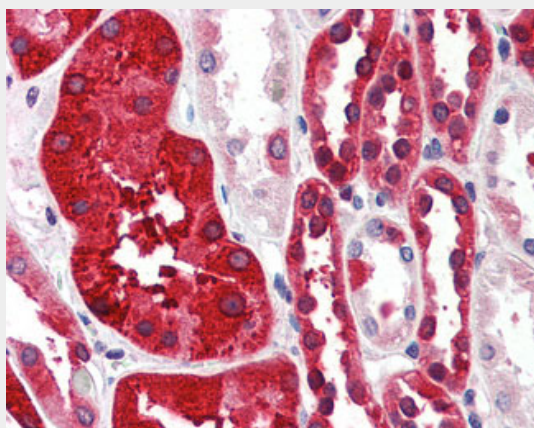
Tissue Location

Expressed in the liver.

Ferritin Heavy Chain / FTH1 Antibody (C-Terminus) - Protocols

Provided below are standard protocols that you may find useful for product applications.

- [Western Blot](#)
- [Blocking Peptides](#)
- [Dot Blot](#)
- [Immunohistochemistry](#)
- [Immunofluorescence](#)
- [Immunoprecipitation](#)
- [Flow Cytometry](#)
- [Cell Culture](#)

Ferritin Heavy Chain / FTH1 Antibody (C-Terminus) - Images

Anti-FTH1 antibody IHC of human kidney.

Ferritin Heavy Chain / FTH1 Antibody (C-Terminus) - Background

Stores iron in a soluble, non-toxic, readily available form. Important for iron homeostasis. Has ferroxidase activity. Iron is taken up in the ferrous form and deposited as ferric hydroxides after oxidation. Also plays a role in delivery of iron to cells. Mediates iron uptake in capsule cells of the developing kidney (By similarity).

Ferritin Heavy Chain / FTH1 Antibody (C-Terminus) - References

- Costanzo F.,et al.EMBO J. 3:23-27(1984).
Boyd D.,et al.J. Biol. Chem. 260:11755-11761(1985).
Chou C.-C.,et al.Mol. Cell. Biol. 6:566-573(1986).
Costanzo F.,et al.Nucleic Acids Res. 14:721-736(1986).
Hentze M.W.,et al.Proc. Natl. Acad. Sci. U.S.A. 83:7226-7230(1986).

